

Superwinch Ltd
Abbey Rise
Tavistock
Devon P19 9DR
England

Tel: +44 (0) 1822 614101
Fax: +44 (0) 1822 615204
Email: sales@superwinch.net

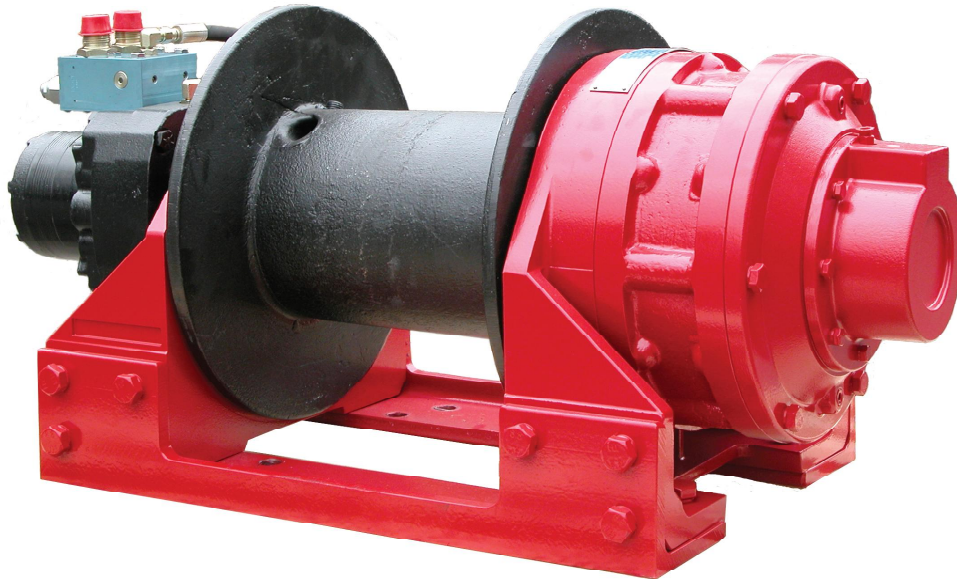


Superwinch Inc
Winch Drive
Putnam
Connecticut 06260
USA

Tel: 1 860 928 7787
Fax: 1 860 928 1143
Email: info@superwinch.com

H20P/25P/30P, HEAVY DUTY HYDRAULIC WINCH

The Superwinch H20/25/30P – from the UK's largest winch producer, rugged, heavy duty, high quality 9,080kg / 11,340kg / 13,610kg planetary drive hydraulic winches, engineered to ensure total reliability during recovery / winching operations. Designed to fill the Professional Vehicle Operators need for a dependable, heavy duty unit for a wide range of applications.



Winch shown for illustration purposes only

Outstanding Features

- Winch** – Robust construction, engineered to meet J706 standards.
- Gearbox** – Heavy duty, high efficiency 2 stage planetary giving optimum reliability.
- Brake** – Multi-disc type, spring applied, hydraulic release, full load holding.
- Motor** – Rugged, high torque, low speed unit of proven reliability.
- Free Spooling** – Spring applied, pneumatic released for rapid rope pay-out.
- Drum** – Heavy duty cast drum, running on substantial roller bearings.
- Load control valve** – Fitted as standard to ensure complete load control.
- Testing** – All winches are load tested before shipping.

SUPERWINCH

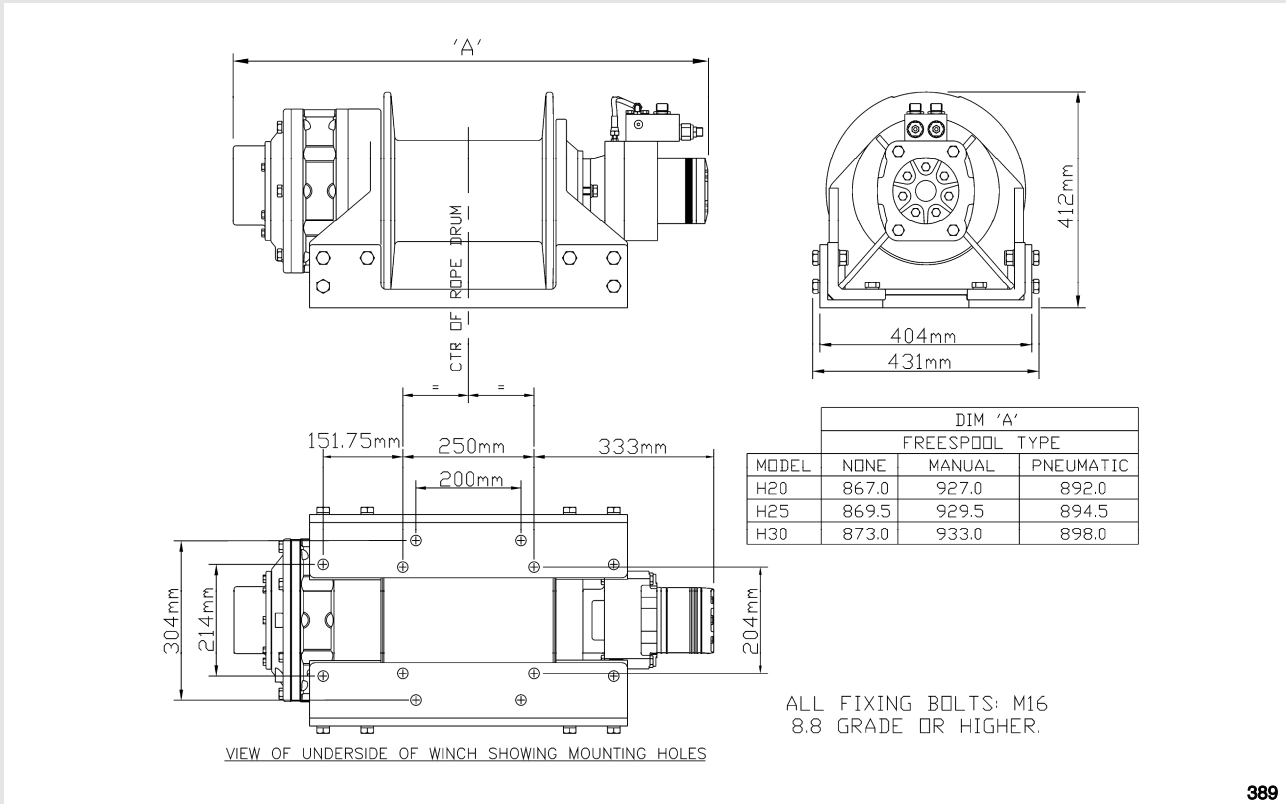
The Superwinch H20P / H25P / H30P, heavy duty hydraulic, planetary drive, winch range is available in our standard configuration, or with manually operated freespool, please contact your distributor or Superwinch for details.

WINCH

| | Part No |
|------------------------|---------|
| H20P Winch, Air Clutch | 5440 |
| H25P Winch, Air Clutch | 5450 |
| H30P Winch, Air Clutch | 5460 |

OPTIONAL ACCESSORIES

| | Part No |
|-------------------------|---------|
| Cable Tensioner | 5683 |
| Wire Rope, 20 mm x 50 m | 0573 |



389

SPECIFICATION

| | H20P | H25P | H30P |
|----------------------------------|--------------------|----------------------|----------------------|
| Rated Line Pull, Bottom Layer | 89.0kN, (9,080 kg) | 111.2kN, (11,340 kg) | 133.4kN, (13,610 kg) |
| Line Speed, Bottom Layer No Load | 10.2 m/min | 8.6 m/min | 7.6 m/min |
| Rope Diameter, Recommended | 16 mm | 18 mm | 20 mm |
| Rope Length, Maximum | 70 m | 40 m | 30 m |
| Drum Diameter | 195 mm | 195 mm | 195 mm |
| Weight, Excluding Wire Rope | 198 kg | 198 kg | 198 kg |

PERFORMANCE

| | H20P | H25P | H30P |
|------------------------------|----------------------|----------------------|-----------------------|
| Maximum Oil Pressure | 200 bar, (2,940 psi) | 200 bar, (2,940 psi) | 200 bar, (2,940 psi) |
| Maximum Recommended Oil Flow | 75 l/min | 75 l/min | 75 l/min |
| Line Pull, 2nd Layer | 77.3 kN, (7,890 kg) | 95.2 kN, (9,710 kg) | 112.6 kN, (11,490 kg) |
| Line Pull, 3rd Layer | 68.3 kN, (6,790 kg) | 83.2 kN, (8,490 kg) | 97.4 kN, (9,930 kg) |
| Line Pull, 4th Layer | 61.2 kN, (6,240 kg) | 73.9 kN, (7,540 kg) | 85.7 kN, (8,750 kg) |

The Superwinch H20P / H25P / H30P are designed and manufactured in the UK



Design, Materials and specifications are subject to change without notice. Superwinch are not responsible for printing errors inadvertently made in the production of this brochure.

Superwinch Ltd. Abbey Rise, Tavistock, Devon. PL19 9DR. Tel: 44 (0) 1822-614101. Fax: 44 (0) 1822-615204. e-mail: sales@superwinch.net