

# RAMSEY WINCH



## H-800 Series



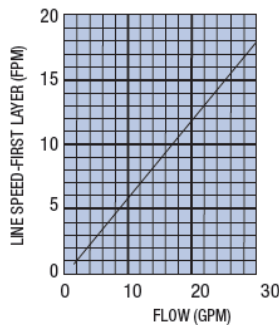
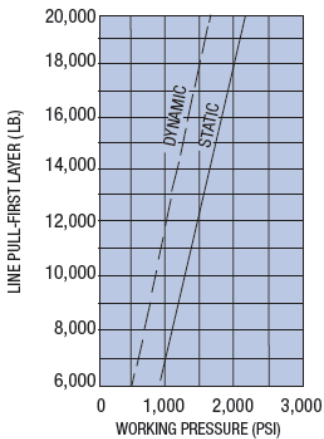
- Rated Line pull 20,000lbs
- Recommended cable 5/8"
- Meets SAE-J706
- Made in the USA

### Applications

- Towing & Recovery
- Forestry
- Construction
- Petroleum
- Mining
- Refuse

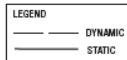
### Hydraulic Systems Performance

H-800 Models only



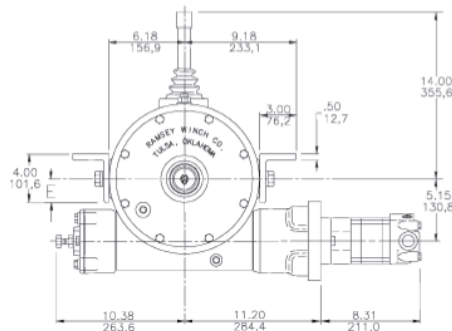
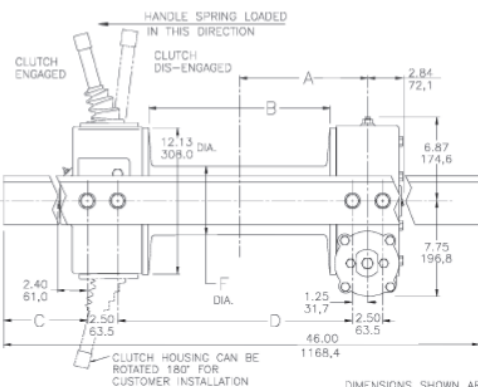
H-800, HY-800  
Performance\*  
20,000 LB. duty rating  
40:1 gear ratio

\* Performance based on a motor displacement of 14.9 CU in with 30 GPM maximum flow rate.



### Overall Dimensions

H-800 Models only



DIMENSIONS SHOWN ARE INCHES OVER MILLIMETERS

### Specifications

Rated Line Pull	20,000 lbs.....(9,060 kgs)
Gear Reduction	H-800.....40:1
Weight	H-800.....330 lbs. (150 kgs) HY-800.....325 lbs. (148 kgs)

LAYER OF CABLE		1	2	3	4	5 **
RATED LINE PULL PER LAYER	Lbs. Kgs.	20,000 9,060	16,600 7,510	14,200 6,430	12,400 5,610	11,000 4,980
*CABLE CAPACITY PER LAYER 15" DRUM H-800	Ft. M.	35 10.0	75 22.0	125 38.0	180 54.0	240 72.0
*CABLE CAPACITY PER LAYER 9 3/8" DRUM HY-800	Ft. M.	20 6.0	45 13.0	75 22.0	110 33.0	150 45.0
*LINE SPEED	Worm RPM	1	2	3	4	5 **
H-800	FPM MPM (30GPM)	460 18 5.4	22 6.6	26 7.9	29 8.8	33 10.0
HY-800	FPM MPM (30GPM)	460 18.4 5.5	21 6.3	25 7.6	28 8.5	31 9.4

\* These specifications are based on recommended 5/8" (16mm) EIPS cable.

\*\* 5th layer does not conform to SAE J706

WINCH MODEL	A INCHES MM	B INCHES MM	C INCHES MM	D INCHES MM	E INCHES MM	F INCHES MM
H-800	10.62 269.7	15.00 381.0	13.81 350.7	19.38 492.2	4.00 101.6	5.69 144.5
HY-800	7.75 196.8	9.44 239.8	13.68 347.4	13.63 346.2	4.00 101.6	5.50 139.7