

Superwinch Ltd
Abbey Rise
Tavistock
Devon P19 9DR
England

Tel: +44 (0) 1822 614101
Fax: +44 (0) 1822 615204
Email: sales@superwinch.net

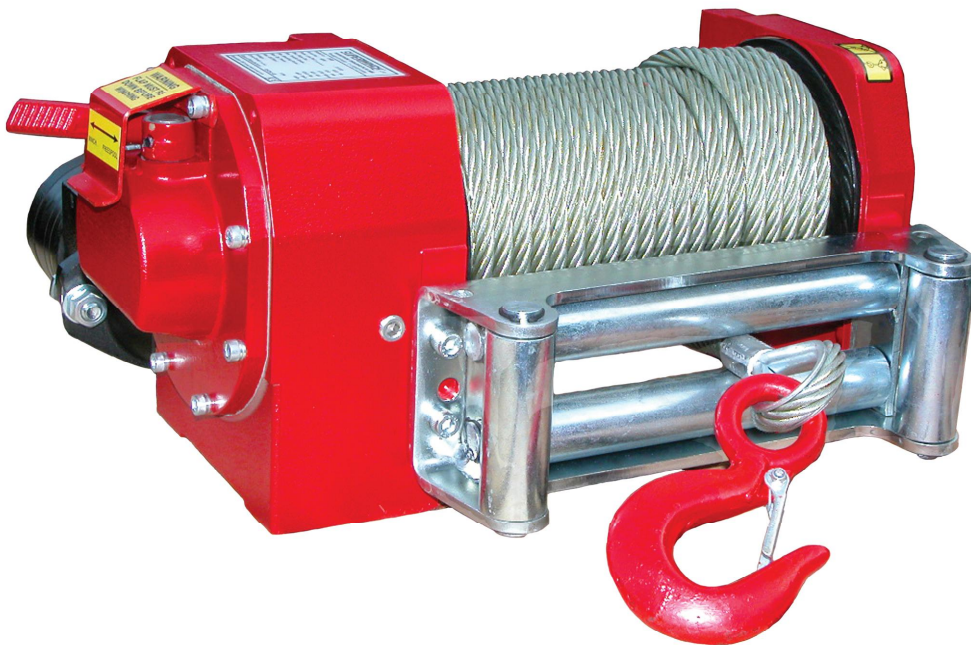


Superwinch Inc
Winch Drive
Putnam
Connecticut 06260
USA

Tel: 1 860 928 7787
Fax: 1 860 928 1143
Email: info@superwinch.com

H9W, WORM DRIVE HYDRAULIC WINCH

The Superwinch H9W – from the UK's largest winch producer, a rugged, and versatile 4,080 kg worm drive hydraulic winch, engineered to a high quality to ensure total reliability during winching operations. Designed to fill the Professional Vehicle Operators need for a dependable unit for Speclift, trailer and recovery work applications including flatbed.



Winch shown for illustration purposes only

Outstanding Features

- Winch** – Compact size & robust construction, engineered to meet J706 standards.
- Gearbox** – Heavy duty, steel centred aluminium bronze wormwheel and casehardened precision ground worm for optimum reliability.
- Brake** – Irreversible worm set, for substantial reliable braking action.
- Motor** – Rugged, high torque unit of proven reliability.
- Free Spooling** – Manual released for rapid rope pay-out.
- Drum** – Heavy duty fabricated steel assembly mounted on maintenance-free plain bearings.
- Testing** – All winches are load tested before shipping.

SUPERWINCH

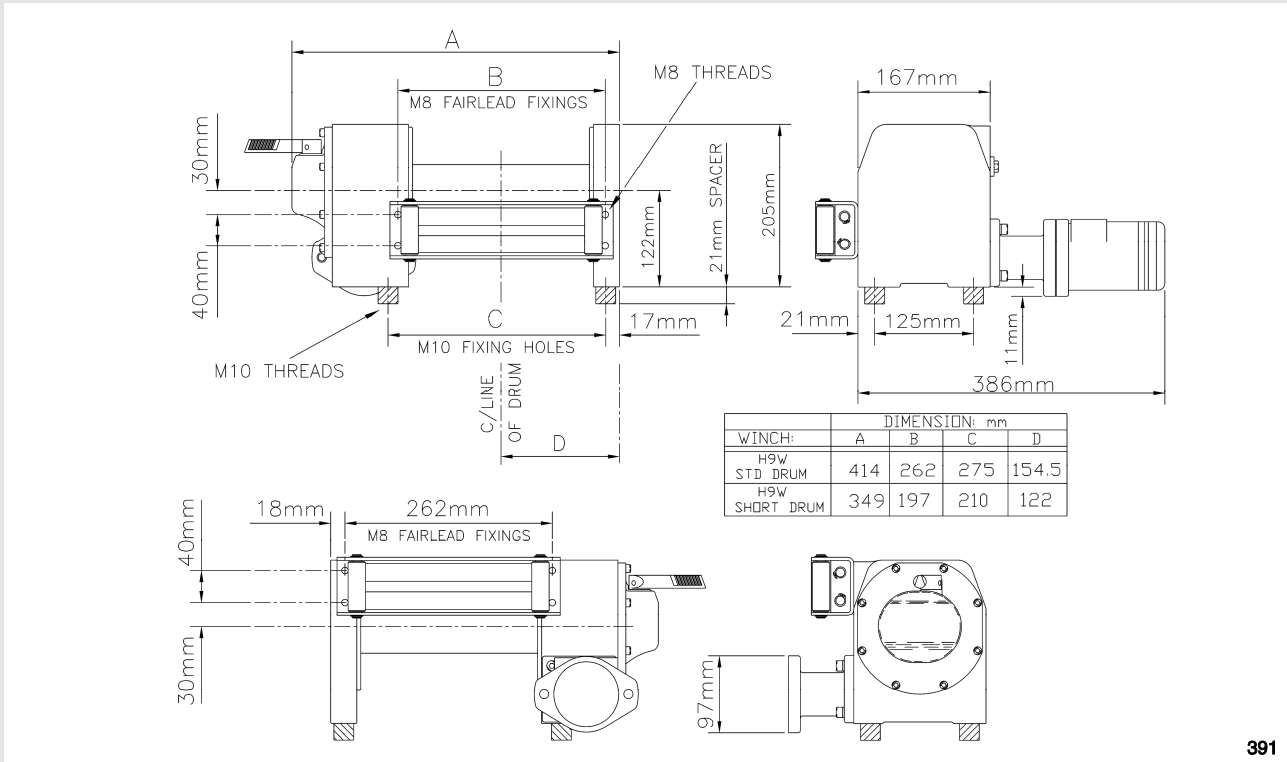
The Superwinch H9W, a proven worm and wormwheel winch is available with standard length drum, 225mm or with short drum, 160mm

WINCH

	Part No
H9W Winch Only	8588
H9W Winch, With Roller Fairlead & Mount Plate	8589
H9W Winch, Short Drum	8569

OPTIONAL ACCESSORIES

	Part No	
	Standard Drum	Short Drum
Roller Fairlead	8584	8978
Mount Plate	8576	N/A
Cable Tensioner	5605	N/A
Wire Rope, 10mm x 23 m	0561	N/A
Pulley Block, 9,100kg	7750	
Bow Shackle	0509	



391

SPECIFICATION

	Short Drum	Standard Drum
Rated Line Pull, Bottom Layer	40kN (4,080kg)	40 kN (4,080 kg)
Line Speed, Bottom Layer, No Load	4.8 m/min	4.8 m/min
Wire Rope Diameter	10 mm	10 mm
Maximum Wire Rope Length, Std Drum	14 m	23 m
Rope Drum Diameter	76 mm	76 mm
Weight	25 kg	26 kg

PERFORMANCE

	Short Drum	Standard Drum
Maximum Oil Pressure	110 bar (1,620 psi)	110 bar (1,620 psi)
Maximum Oil Flow	45 l/min	45 l/min
Line Pull, 2nd Layer	32.5 kN, (3,320 kg)	32.5 kN, (3,320 kg)
Line Pull, 3rd Layer	27.4 kN, (2,800 kg)	27.4 kN, (2,800 kg)

The Superwinch H9W is designed and manufactured in the UK



Design, Materials and specifications are subject to change without notice. Superwinch are not responsible for printing errors inadvertently made in the production of this brochure.

Superwinch Ltd. Abbey Rise, Tavistock, Devon. PL19 9DR. Tel: 44 (0) 1822-614101. Fax: 44 (0) 1822-615204. e-mail: sales@superwinch.net