



# HMW 10 PHT - EN

EN 14492-1 Compliant

## Specifications

- Max. pulling capacity : 10.000 kg
- Hydraulic release brake
- Max. rope length : 36.56 m
- Min' wire rope : 16 mm 2160 MPa
- Hydromotor : 160 cm<sup>3</sup> (9.6 in<sup>3</sup>)
- Max. pressure : 130 bar (1885 psi)
- Max. flow : 60 l (15.8 gal)
- Gear ratio : 28 : 1
- Oil types - capacity : 85W140 - 2 l.

## Weight

- Winch : 188 kg
- Roller fairlead : 18 kg
- Cable tensioner : 8 kg



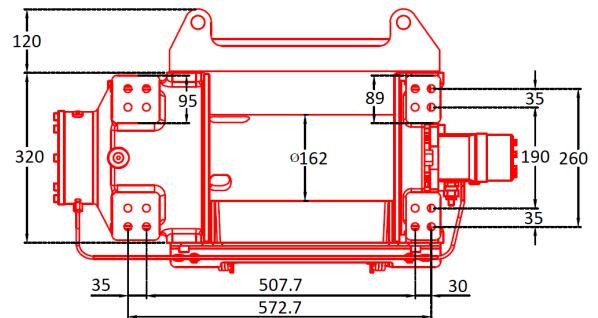
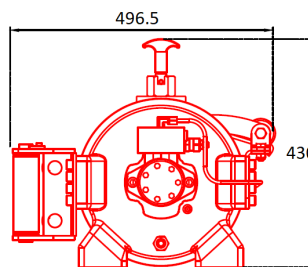
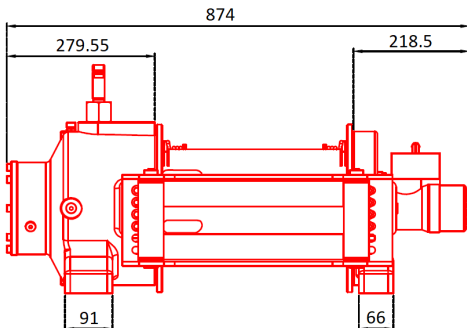
### Supplied Standard With

Roller fairlead  
Cable tensioner

### Options

Manual Freespool  
Pneumatic Freespool

Rope Layer	Line Pull Kg / Lb	Line Speed M / Ft p/min	Drum Capacity M / Ft
1	10000 / 22040	6.73 / 22	10.56 / 34.6
2	8900 / 19615	7.9 / 25.9	22.35 / 73.30
(EN) 3	7750 / 17080	9 / 29.7	36.56 / 119.9
4	6850 / 15090	10.2 / 33.5	51.84 / 170



### Warning!

This winch is designed and manufactured for pulling. Don't lift person or material.  
Always keep last 5 wrap on the drum.  
The technical details given above just for information.

**Hammer Winch** keeps the right to change the technical details.