



HMW 12.6 PHT - EN

Specifications

- Max.pulling capacity : 12600 kg
- Max.ropelength EN : 37 m
- Hydraulic release brake
- Min' wire rope : 18 mm 2160 MPa
- Hydromotor : 200 cm³ (12 in³)
- Max. pressure : 175 bar (2540psi)
- Max. flow : 60 l (15.8 gal)
- Gear ratio : 28 : 1
- Oil types - capacity : 85W140 - 2 l.

Weight

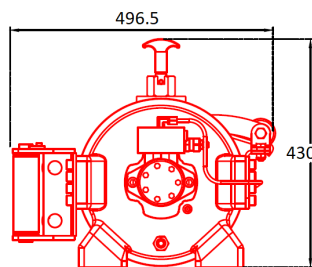
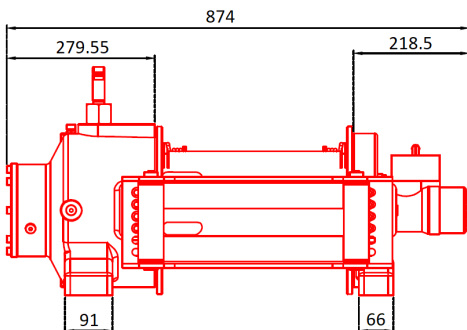
- Winch : 188 kg
- Roller fairlead : 18 kg
- Cable tensioner : 8 kg



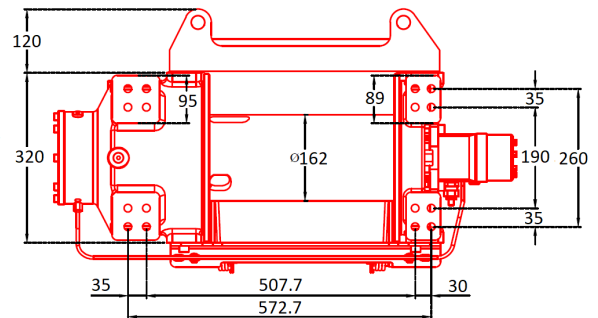
Supplied Standard With
Roller fairlead
Cable tensioner

Options
Manual Freespool
Pneumatic Freespool

Rope Layer	Line Pull Kg / Lb	Line Speed M / Ft p/min	Drum Capacity M / Ft
1	12600 / 27770	6.0 / 19.68	10.74 / 35.22
2	10750 / 23690	7.1 / 23.28	22.69 / 74.42
(EN) 3	9350 / 20600	8.1 / 26.56	37.15 / 121.85
4	8280 / 18250	9.2 / 30.17	52.62 / 172.60



Mount Bolts
M16 x 16 bolts



Warning!

This winch is designed and manufactured for pulling. Don't lift person or material.
 Always keep last 5 wrap on the drum.
 The technical details given above just for information.

Hammer Winch keeps the right to change the technical details.